

# FLORICULTURE

Limited to Shasta, Siskiyou, Modoc, Lassen, Plumas, Tehama & Trinity Counties.



## Reminder!!

**Please Note: There will only be one flower show.**

<b>ENTRIES CLOSE:</b>	Fri., June 18 - 5 PM
<b>ENTRY FEES:</b>	See Divisions NEW entry fees
<b>ENTRY FORMS:</b>	Online
<b>ENTRIES RECEIVED:</b>	Tues., June 22- 8 AM - 5 PM <i>Entries delivered to Trinity Hall</i>
<b>EXHIBITS JUDGED:</b>	Wed., June 23 - 9 AM
<b>EXHIBITS RELEASED:</b>	Sun., June 27 - 8AM -12 PM

### AMERICAN SYSTEM OF JUDGING

#### Floriculture Guideline and Rules:

- Exhibits in this Department must have been grown by the exhibitor within the County, District or Community represented by the exhibitor, except classes for arrangements. Florist and nurseries may exhibit plants, plant materials and flowers which they currently sell but not necessarily grow.
- Only persons licensed to sell nursery stock may sell plant materials which have been incorporated in displays.
- EXHIBITS MUST BE ADEQUATELY AND CORRECTLY LABELED**
- In the fresh-cut flower classes, three stems with blooms must be displayed in each container; leaves should be removed if they will be under water.
- Shasta District Fair will furnish vases for the fresh-cut flowers, only.
- Entries open to non-commercial flower growers, except Div. 52.
- BOOTH:** Fresh plant material should predominate.
- No limit of entries per class except Division 32,38,51,52,& 53**
- If flowers deteriorate, replace on Friday Between 9 AM & 11 AM
- A vase is a container that is taller than it is wide.
- Arrangements not to exceed 24 inches in width or depth.
- No use of dye, color spray or glitter.

### BEST OF SHOW

*Ribbons Only*

Bonsai African Violets Cacti & Succulents  
Mini Potted Roses



## INDIVIDUAL EXHIBITS

### Premiums Offered Per Class

1 <sup>st</sup>	2 <sup>nd</sup>	3 <sup>rd</sup>
\$5.00	\$4.00	\$3.00

*Entry Fee-\$1.00 per entry/per class*

### Sweepstakes for Floriculture Department

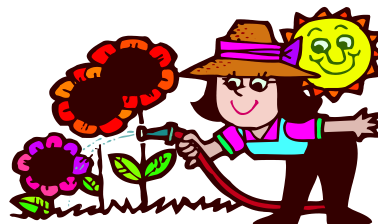
(321)

#### Awards Contingent on Sponsorship

*(Individual Exhibits only, booths excluded)*

1 <sup>st</sup>	2 <sup>nd</sup>	3 <sup>rd</sup>
\$12.00	\$8.00	\$4.00

*Entry Fee-\$1.00 per entry/per class*



## DIVISION 32 Potted Plants

*Limited to one entry per exhibitor per class*

*NOTE: Bonsai may be any kind, style or number shown in suitable container*

#### Class:

- |   |                                 |
|---|---------------------------------|
| 1. African Violet in Bloom  | 10. Cactus                      |
| 2. Asparagus, Ornamental  | 11. Caladium                    |
| 3. Begonia, Tuberous  | 12. Coleus                      |
| 4. Begonia, Other   | 13. Fern                        |
| 5. Bonsai, miniature less than 7" high or wide  | 14. Geranium in bloom           |
| 6. Bonsai, medium, 7" to 18" high or wide   | 15. Philodendron                |
| 7. Bonsai, large over 18" high or wide  | 16. Plant (foliage)             |
| 8. Bonsai, miniature landscape of growing trees or plants (rocks or figurine permitted) | 17. Plant in bloom              |
| 9. Cacti - in 1 container   | 18. Succulents (in 1 container) |
|   | 19. Mini Potted Rose            |
|   | 20. Mini, Any                   |
|   | 21. Orchid, Any                 |
|   | 22. Other not listed            |

## DIVISION 33 Shrubs

*Note: If flowers deteriorate, replace on Friday between 9 AM & 11 AM*

#### Class:

- |                    |                     |
|--------------------|---------------------|
| 1. Shrubs, berried | 2. Shrubs, flowered |
|--------------------|---------------------|

## DIVISION 34 Miscellaneous

*Note: If flowers deteriorate, replace on Friday between 9 AM & 11 AM*

#### Class:

- |                                      |                               |
|--------------------------------------|-------------------------------|
| 1. Basket -Cut Flowers (One Variety) | 4. Corsage (fresh material)   |
| 2. Basket - Cut Flowers (Mixed)      | 5. Corsage (Dry Material)     |
| 3. Dried Flower Collection           | 6. Boutonniere (Corsage)      |
|                                      | 7. Indoor Garden/Terrarium    |
|                                      | 8. Lei (fresh material)       |
|                                      | 9. Lei (Dry or silk material) |

## DIVISION 35 Bridal Party Florals

*Note: If flowers deteriorate, replace on Friday between 9 AM & 11 AM*

*Exhibitor Guidebook & Entry Forms Now available on-line*

[www.shastadistrictfairandeventcenter.com](http://www.shastadistrictfairandeventcenter.com)

# FLORICULTURE

Limited to Shasta, Siskiyou, Modoc, Lassen, Plumas, Tehama & Trinity Counties.

Class: *Fresh Flowers*

- |                          |                        |
|--------------------------|------------------------|
| 1. Brides Bouquet        | 4. Groom's Boutonniere |
| 2. Mother's corsage      | 5. Flower Girl Basket  |
| 3. Maid of Honor Bouquet |                        |

*Dry or Silk*

- |                     |                        |
|---------------------|------------------------|
| 6. Brides Bouquet   | 8. Groom's Boutonniere |
| 7. Mother's corsage | 9. Flower Girl Basket  |

## DIVISION 36 Bouquets

Use at least 10 stems and more if desired and at least 2 varieties unless otherwise stated. Display in your own container using any style arrangement.  
Note: If flowers deteriorate, replace on Friday between 9 AM & 11 AM

Class:

- |                               |                         |
|-------------------------------|-------------------------|
| 1. Mixed Annuals & Perennials | 3. One variety, Annuals |
| 2. One variety of Perennials  |                         |

## DRY & SILK ARRANGEMENTS

(arrangements not to exceed 24 inches in width or depth)

Premiums Offered Per Class

1 <sup>st</sup>	2 <sup>nd</sup>	3 <sup>rd</sup>
\$5.00	\$4.00	\$3.00
Entry fee \$1.00 per entry/per class		

## DIVISION 37 Open Arrangements

(OPEN TO ALL)

Class:

1. Dry Arrangement
2. Silk Flower Arrangement
3. Fair Theme

## DIVISION 38 Table Settings

no silverware -- size limit: 23" by 23"  
must use fresh flowers or foliage  
one entry per class per exhibitor

Note: If flowers deteriorate, replace on Friday between 9 AM & 11 AM



Premiums Offered Per Class

1 <sup>st</sup>	2 <sup>nd</sup>	3 <sup>rd</sup>
\$5.00	\$4.00	\$3.00
(Entry Fee: \$1.00 per Entry per Class)		

Class:

- |                 |                  |
|-----------------|------------------|
| 1. Wedding      | 4. Afternoon Tea |
| 2. Christmas    | 5. Fair Theme    |
| 3. Thanksgiving |                  |

Premiums Offered Per Class

1 <sup>st</sup>	2 <sup>nd</sup>	3 <sup>rd</sup>
\$5.00	\$4.00	\$3.00

Entry Fee-\$ 1.00 per entry /per class

*Special Awards*

**BEST OF SHOW DIVISION 39** (391) \$25.00

**BEST OF SHOW DIVISIONS 41 – 44** \$25.00  
(411, 421, 431, 441)

*Arrangements*

**Awards Contingent on Sponsorship**



## DIVISION 39 Fresh Cut Flowers

Class: (3 stems)

- |                                 |                           |
|---------------------------------|---------------------------|
| 1. Ageratum                     | 23. Gladiola – 1 stem     |
| 2. Alyssum                      | 24. Geranium              |
| 3. Asters                       | 25. Hydrangea             |
| 4. Calendula, Single            | 26. Larkspur              |
| 5. Calendula                    | 27. Lily, Day, Single     |
| 6. Carnation                    | 28. Lily, other varieties |
| 7. Celosia                      | 29. Marigold, African     |
| 8. Chrysanthemums               | 30. Marigold, French      |
| 9. Coral Bells                  | 31. Marigold, Sgl French  |
| 10. Coreopsis                   | 32. Nasturtiums           |
| 11. Cosmos                      | 33. Orchid, Any           |
| 12. Dahlia, Any                 | 34. Pansy                 |
| 13. Daisy, Gloriosa             | 35. Petunia               |
| 14. Daisy, Marconi              | 36. Petunia, Single       |
| 15. Daisy, Shasta               | 37. Petunia, Double       |
| 16. Daisy, Shasta – Mini        | 38. Scabiosa              |
| 17. Daisy, , Other              | 39. Sweet Peas            |
| 18. Dianthus, Pink              | 40. Verbena               |
| 19. Everlasting, Globe Amaranth | 41. Viola                 |
| 20. Everlasting, Statice        | 42. Any Other, Specify    |
| 21. Forget-Me-Nots              | 43. Collections, Any      |
| 22. Gaillardias, Prnnl          | 44. Best New Flower-Named |

Collections must be 5 or more varieties, number of varieties to count  
Exhibitor must provide vase.

## DIVISION 40 Roses

(3 stems)

Class:

- |                |              |
|----------------|--------------|
| 1. Hybrid teas | 5. Miniature |
|----------------|--------------|

Exhibitor Guidebook & Entry Forms Now available on-line

[www.shastadistrictfairandeventcenter.com](http://www.shastadistrictfairandeventcenter.com)

# FLORICULTURE

Limited to Shasta, Siskiyou, Modoc, Lassen, Plumas, Tehama & Trinity Counties.

- |                      |                                       |                   |                   |
|----------------------|---------------------------------------|-------------------|-------------------|
| 2. Grandiflora       | 6. Roses, other                       | 4. Orient Express | 8. Wedding Dreams |
| 3. Floribunda        | 7. Roses-Collection                   |                   |                   |
| 4. Floribunda, Spray | (6 varieties in one container, named) |                   |                   |



## DIVISION 44 Open Arrangements (OPEN TO ALL)

Class:

- |                        |                       |
|------------------------|-----------------------|
| 1. Kitchen Kapers      | 4. Hot Stuff          |
| 2. Timeless Traditions | 5. Jungle in the Park |
| 3. Americana           | 6. Fair Theme         |

## ARRANGEMENTS

Note: Fresh flowers and foliage are required in all arrangements, & cannot be a potted plant

(Arrangements not to exceed 24 inches in width or depth)

Premiums Offered Per Class		
1 <sup>st</sup>	2 <sup>nd</sup>	3 <sup>rd</sup>
\$5.00	\$4.00	\$3.00
Entry Fee-\$1.00 per entry/per class		



## DIVISION 41 Novice Arrangements

(Open to those who have never won a blue ribbon in artistic arrangement in any organized flower show)

Class:

- |                     |                         |
|---------------------|-------------------------|
| 1. California Gold  | 5. Red Letter Day       |
| 2. Some like it Hot | 6. A Little Bit Country |
| 3. Dance with Me    | 7. Grand Champion       |
| 4. Bon Voyage       | 8. Let Freedom Ring     |

## DIVISION 42 Intermediate Fresh Arrangements

(Open to those who have won a blue ribbon but not more than five blue ribbons in any organized flower show)

Class:

- |                       |                                |
|-----------------------|--------------------------------|
| 1. Midnight Delight   | 5. Something Old Something New |
| 2. Jewel Box          | 6. Santa was Here              |
|                       | 7. Patchwork Quilt             |
| 3. Forest Time        | 8. Country Trails              |
| 4. Golden Anniversary |                                |

## DIVISION 43 Advanced Fresh Arrangements

Class:

- |                            |                    |
|----------------------------|--------------------|
| 1. Summer Round Up         | 5. American Spirit |
| 2. By The Sea              | 6. Stack it Up     |
| 3. Partners [2 containers] | 7. Irish Mist      |

Exhibitor Guidebook & Entry Forms Now available on-line  
[www.shastadistrictfairandeventcenter.com](http://www.shastadistrictfairandeventcenter.com)

# FLORICULTURE

Limited to Shasta, Siskiyou, Modoc, Lassen, Plumas, Tehama & Trinity Counties.

## GARDENS

<b>ENTRIES CLOSE:</b>	Fri, May 21 – 5 PM
<b>ENTRY FEES:</b>	See Divisions
<b>ENTRY FORMS:</b>	Online
<b>ENTRIES RECEIVED:</b>	Sun -Tues., June 20 – 22 8 AM – 5 PM
<b>EXHIBITS JUDGED:</b>	Wed., June 23 - 9 AM
<b>EXHIBITS RELEASED:</b>	Sun., June 27 – 8 AM -12 PM
<b>AMERICAN SYSTEM OF JUDGING</b>	

### Encourage use of Fair Theme –

Booth size will be determined Booths shall be uniform size-Commercial booths will be displayed in Fusaro Hall-  
Limited to first 4 Entries



### Floriculture Booth Guideline and Rules:

- Exhibits in this Department must have been grown by the exhibitor within the County, District or Community represented by the exhibitor. Florist and nurseries may exhibit plants, plant materials and flowers which they currently sell but not necessarily grow.
- Only persons licensed to sell nursery stock may sell plant materials which have been incorporated in displays.
- EXHIBITS MUST BE ADEQUATELY AND CORRECTLY LABELED**
- All lighting in Feature Booths must have on/off switch accessible to the Fair Staff.**
- Entries open to non-commercial flower growers, except Div. 52.
- BOOTH:** Fresh plant material should predominate.
- All plant materials must be inside design area.

## DIVISION 51 Non-Commercial Floriculture Displays

Premiums Offered Per Class				
1 <sup>st</sup>	2 <sup>nd</sup>	3 <sup>rd</sup>	4 <sup>th</sup>	
\$175	\$150	\$100	Ribbon	
(Entry Fee: \$20.00 per Entry per Class)				

Booths will be displayed in Trinity Hall

Class:

- Non-Commercial Garden

### Encourage use of Fair Theme –

Flower booth by Individuals or Organizations,  
10 ft. by 10 ft. (100 sq. feet). Booths shall be uniform in size

## DIVISION 52 Commercial & Professional Garden Displays

Premiums Offered Per Class				
1 <sup>st</sup>	2 <sup>nd</sup>	3 <sup>rd</sup>	4 <sup>th</sup>	
\$175	\$150	\$100	Ribbon	
(Entry Fee: \$20.00 per Entry per Class)				

Class:

- Commercial Garden –

## DIVISION 53 Outside Garden

Premiums Offered Per Class				
1 <sup>st</sup>	2 <sup>nd</sup>	3 <sup>rd</sup>	4 <sup>th</sup>	5 <sup>th</sup>
\$175	\$150	\$100	Ribbon	Ribbon
(Entry Fee: \$20.00 per Entry per Class)				

### Guidelines for Outside Garden:

- Pre-planting, anytime after submission of entry form and prior to June 22, 2021.
- To contain in-ground & container planting.
- All gardens must be maintained prior and during the Fair, and should be watered daily by Exhibitor.
- Choice of planting plots will be made by order of entries received and shall be limited to the 1st four entries.
- Fairgrounds will be open for working on garden between 8 AM to 4:45 PM -- Monday thru Friday.

Class:

- Outside Garden

### Encourage use of Fair Theme:



Exhibitor Guidebook & Entry Forms Now available on-line

[www.shastadistrictfairandeventcenter.com](http://www.shastadistrictfairandeventcenter.com)